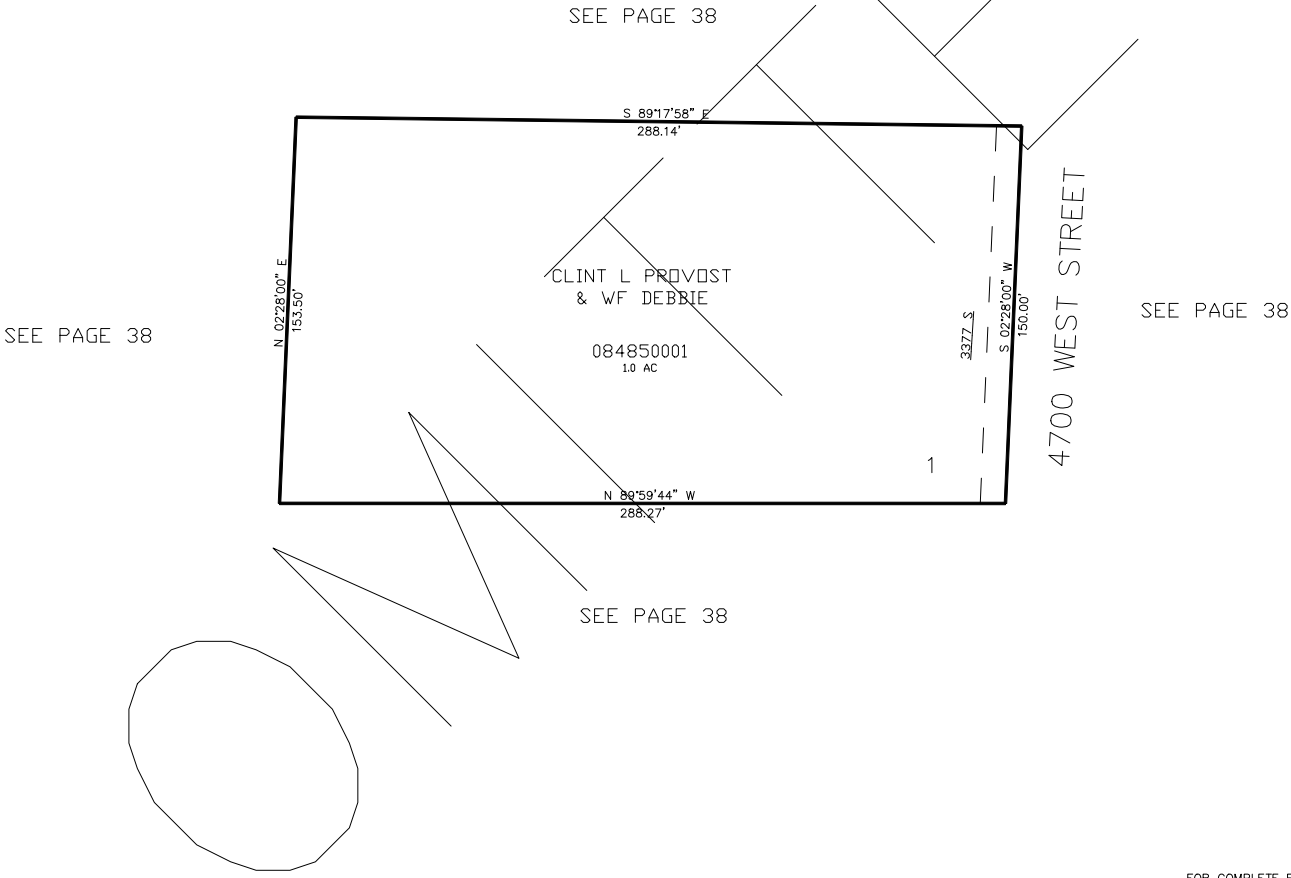


PART OF THE NW 1/4 OF SECTION 5, T.5N., R.2W, S.L.B. & M.  
**MAXINE MEADOWS SUBDIVISION**

IN WEBER COUNTY  
SCALE 1" = 40'

TAXING UNIT: 291



10' UTILITY & DRAINAGE EASEMENTS EACH  
SIDE OF PROPERTY LINES AS INDICATED  
BY DASHED LINES EXCEPT AS OTHERWISE  
SHOWN.

FOR COMPLETE ENG DATA SEE  
ORIGINAL DEDICATION PLAT IN  
BOOK 66, PAGE 39 OF RECORDS.